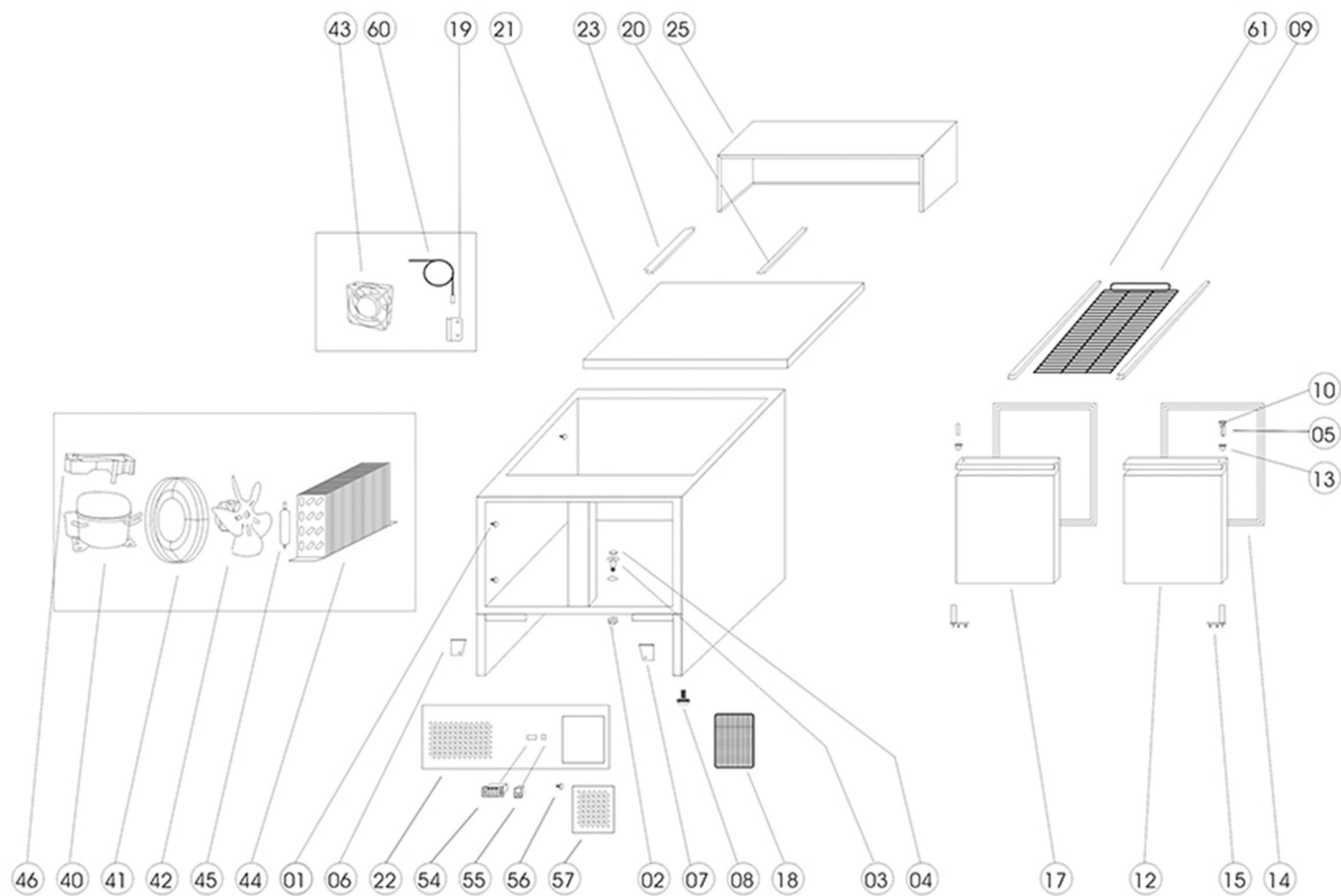


Ersatzteilliste-Explosionszeichnung

COOL-LINE-Pizzatisch PT 9

[Art. 435208001]





16442 / GP92

Position	ItemNo	Description
02	11455	Drain Pipe Nut
03	11446	Drain Pipe
04	11453	Drain Pipe Cover
05	12834	Down Hinge Right
06	12824	Down Hinge Axis
07	12145	Door Right
08	12629	Gasket 494x396
09	15053	Shelf 325 x 570
10	12960	Top Hinge
11	14915	Front Side Rail Left
12	14555	Adjustable Feet
13	11455	Drain Pipe Nut
14	11446	Drain Pipe
15	11453	Drain Pipe Cover
17	14850	Back Rail Left
18	11394	Granite Top
19	14770	Divider For GN1/6 Pans 178x16 mm
20	14820	Side Divider Set For 1/6 Pans
21	10942	Cooling Well Frame
22	11265	Stainless Steel Top
23	13303	Air Conductor For Internal Fan
24	13913	Sensor Fixed Clip
25	13896	Probe NTC Dixell/Carel 10 Kohm
26	13594	Internal Fan Support
27	13318	Cond./Evap. Fan Rah1238B
28	14118	Condenser
29	13237	Defrost Water Coil
30	14475	Evaporator/Condensor Fan 4650
31	13308	Basket Guard Grill
32	11590	Water Pan (Plastic)
33	11728	Compressor HPKD190A R600
35	14502	Capillary Tube
36	15722	Filter Drier 20 G
38	14171	Condenser Air Conductor
40	13983	Thermostat Cover Box
41	11085	Front Panel Hexagonal
42	10069	Plastic Cap
43	12908	Nut For Upper Hinge
44	13008	Upper Hinge (1 Part)
45	12780	Door Bushing For 7,6 mm Pin
46	12103	Door Left
48	14916	Front Side Rail Right
49	14851	Back Rail Right
50	12830	Down Hinge Left
61	12514	Guides (Set) 550x20x20

2022-07-06

Finanzen/Service
28307 Bremen
Thalenhorststraße 15
Tel.+49 421 48557-0
Fax+49 421 488650
bremen@nordcap.de

Vertrieb Ost
12681 Berlin
Wolfener Straße 32/34, Haus K
Tel.+49 30 936684-0
Fax+49 30 936684-44
berlin@nordcap.de

Vertrieb West
40699 Erkrath
Max-Planck-Straße 30
Tel.+49 211 540054-0
Fax+49 211 540054-54
erkrath@nordcap.de

Vertrieb Nord
21079 Hamburg
Großmoorbogen 5
Tel.+49 40 766183-0
Fax+49 40 770799
hamburg@nordcap.de

Vertrieb Süd
55218 Ingelheim
Hermann-Bopp-Straße 4
Tel.+49 6132 7101-0
Fax+49 6132 7101-20
ingelheim@nordcap.de



www.nordcap.de